

The Start Menu vs. Start Screen menu has been going on endlessly since Windows 8 was first showcased by Microsoft to reveal [the lack of a Start menu](#) . Fans of the classic Start Menu have since released several third-party apps to bring it back on Windows 8 devices, and we have brought you several such tools here at AddictiveTips over the past few months, which you can check out in our compilation of

[best Windows 8 Start Screen modifiers and Start Menu apps](#)

. However, all these previously mentioned applications only work for the x86 and x64 versions of Windows, i.e. Windows 8 and if you have a Windows RT tablet that uses ARM architecture, you will not be able to take advantage of these apps. What we have for you today is a port of

[previously featured Classic Shell](#)

for jailbroken Windows RT tablets (like Microsoft Surface RT) that bring the Start Menu back on the device and disables the Start Screen.

Simply named Classic Start Menu, the app not only brings back the menu, but also provides a number of options to customize its look and feel. By default x86 and x64 apps cannot run on Windows RT devices and that's why the developer has compiled it from the source code, for the ARM architecture used by Windows RT tablets.

As we mentioned above, this app will work on Jailbroken Windows RT tablets only. This is because on Windows RT, Microsoft doesn't allow execution of any apps not installed from Windows Store by default, even if they are compiled for the platform. If you haven't jailbroken your tablet yet, you can do so by following our excellent guide on [how to jailbreak Microsoft Surface and other Windows RT tablets](#)

Once done, download the ClassicStartMenu ZIP file from the link provided at the end of this post, and extract its contents. It'll be a good idea to use the [Unpacker](#) app for the purpose, since the native method provided in Windows RT's Windows Explorer for extracting files from ZIP archives can be quite cumbersome and confusing. Next, just open the folder where you extracted the files, and run the ClassicStartMenu executable file. The Smart Screen filter will prompt you about the app being unrecognized; just tap the 'More Info' link on that screen, and choose the 'Run anyway' option on the next screen to start the application.

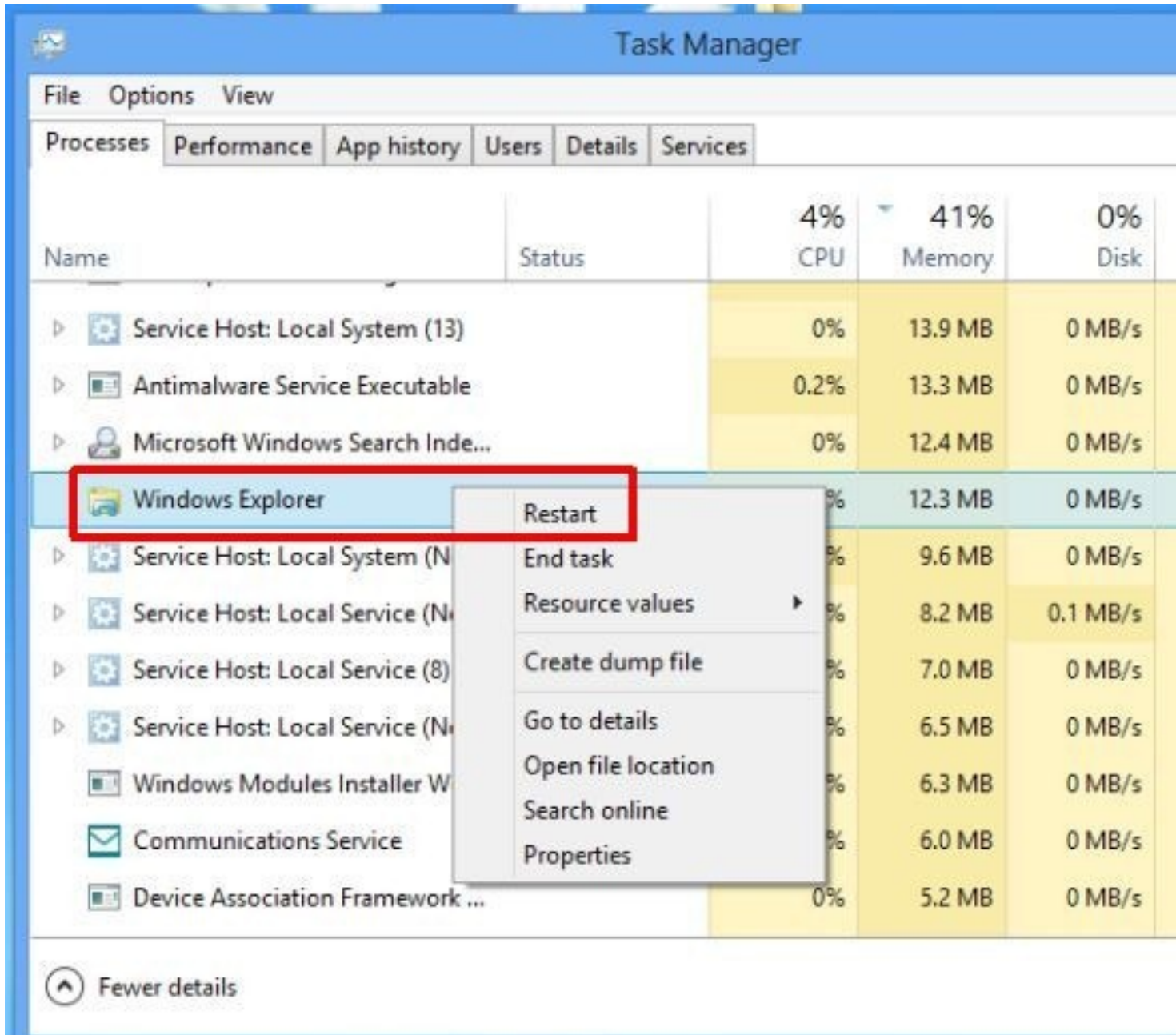
Windows protected your PC

Windows SmartScreen prevented an unrecognized app from starting. Running this app might put your PC at risk.

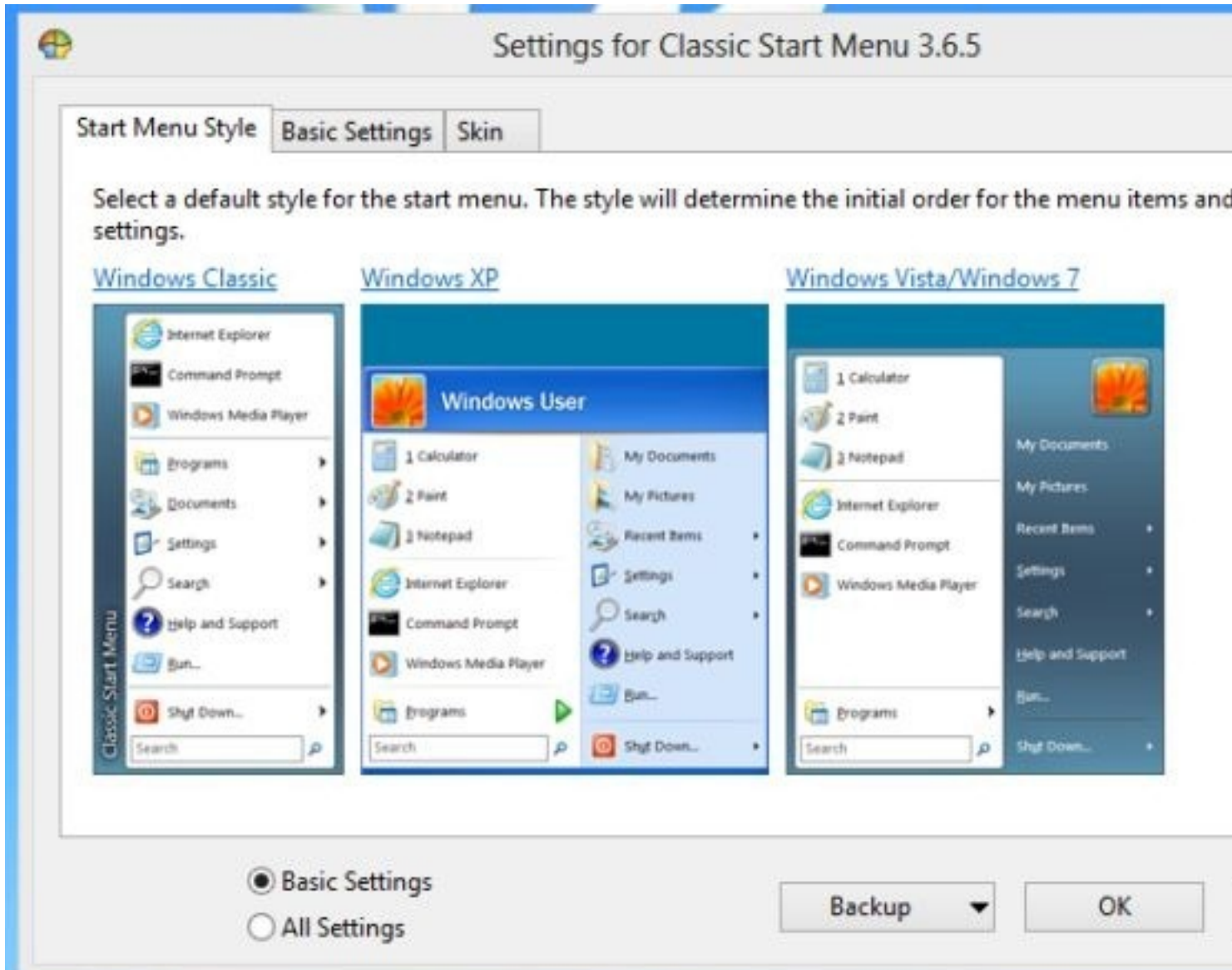
Publisher: Unknown Publisher
App: ClassicStartMenu.exe

Run anyway

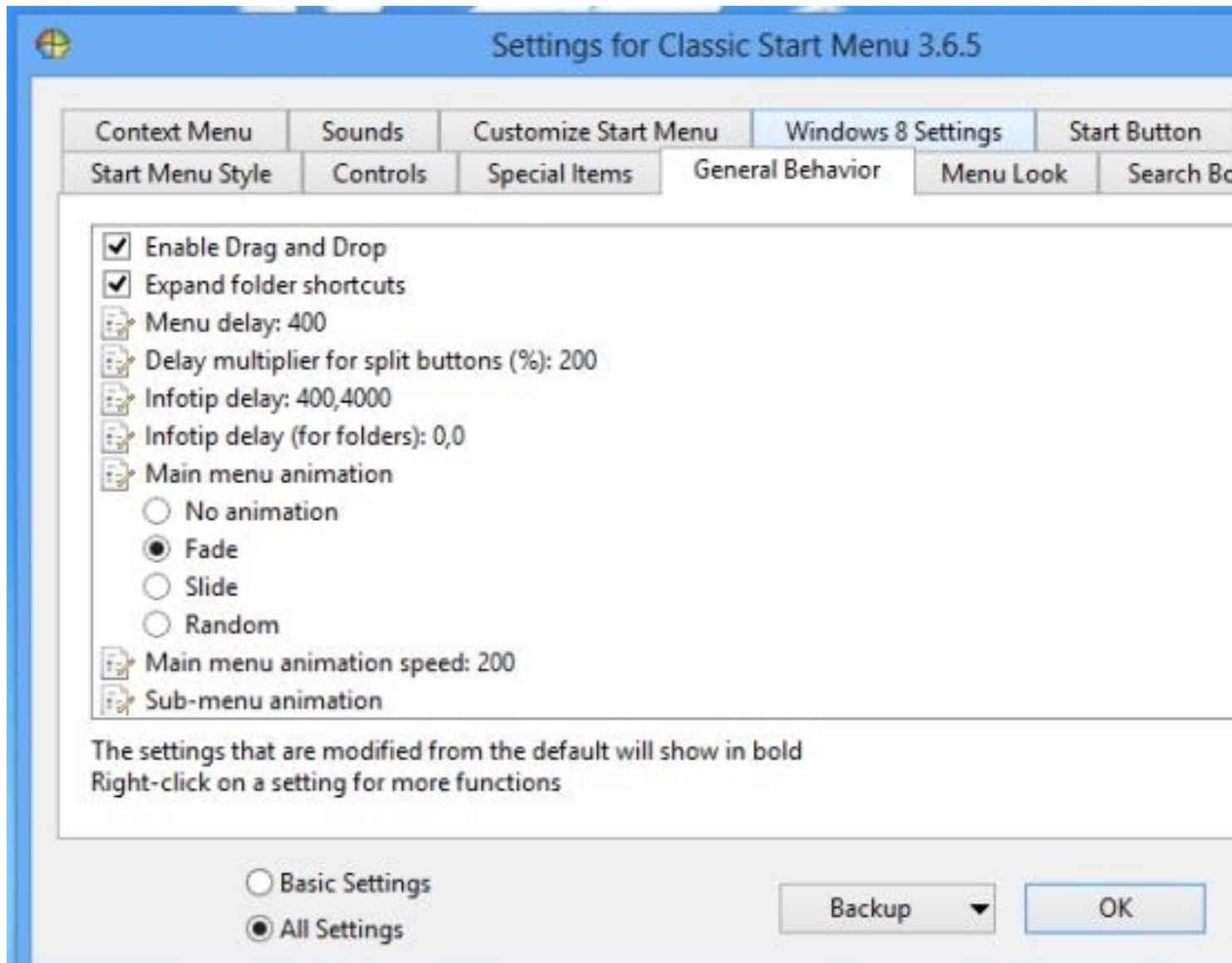
If the Classic Start Menu doesn't appear right away, you'll have to restart Windows Explorer from the



Windows XP and Windows 7 Start Menu All the steps for Windows 8.1 Start Menu Classic can be found in the following link: [http://www.8t.com/2013/07/08/windows-8-1-start-menu-classic/](#)



By @victor1414 on Windows 8.1. Start Menu Settings are available in any language. Original: [http://www.7-7.com/forums/showthread.php?p=100000](#)



Older Style App Will apply to all RT tablets, but will not work on Surface RT. Also, as of this writing, the Start Menu is not complete, the



Classic Start Menu Starts Only on Windows RT tablets. [How to Disable Start Screen on Windows RT Tablets](#) by [Fawad](#)