

If you rely on *mklink* Windows command line utility to create symbolic links for files and folders but hate using frustratingly tiring /D, /H, and /J switches to create symlinks, hardlinks, and folder junctions, respectively, we have a neat, little utility for you – **symlinker** (a.k. a Symbolic Link Creator) is GUI alternative to *mklink*

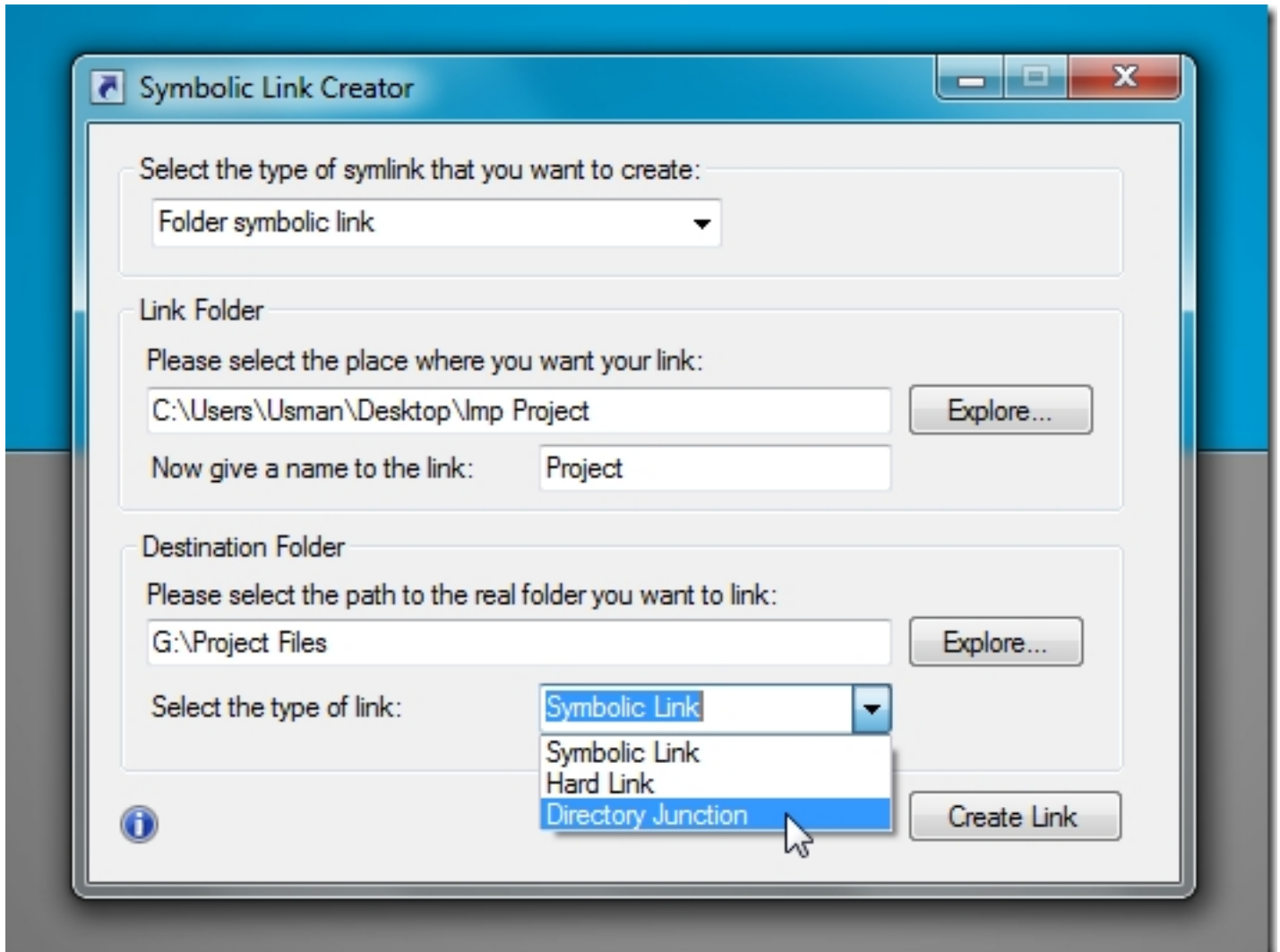
utility that lets you create file and folder symbolic links for all three widely used link types, Symbolic link, Hardlink, and Directory junction. For those who haven't heard about such files and folder links before, read on for a brief intro on each type of link.

Symbolic file link, casually known as symlink, is just like a Windows shortcut with one major difference; it registers itself on the file system, and hence takes no disk space, whereas shortcut usually takes 1KB on disk. When the symlink is deleted, only the pointer used by file system to redirect the request by user to target location gets removed. You can create file symlink using *mklink* command (without switch) and folder symlink with /D switch in CMD tool.

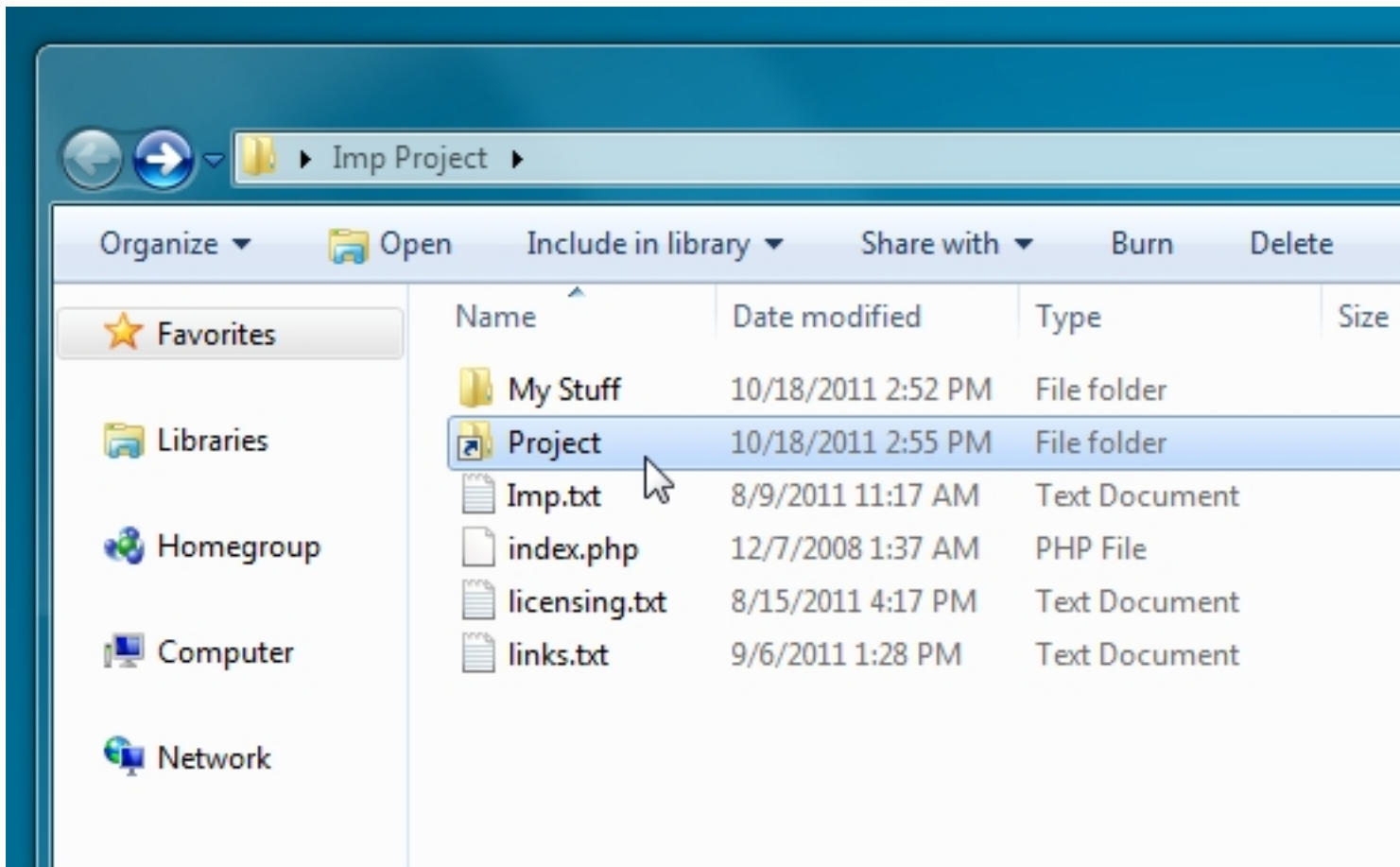
The hardlink, in theory, works only for files and is responsible for cloning the linked data for retaining the original file even if it's deleted. Using the /H *mklink* command switch, you can create hardlinks for files in Windows. The changes made to original file will be reflected in linked file. However, on deleting the original file, the linked file will not be removed.

When you want hardlink for folders, /J should be used; it creates folder junctions which works just like a file hardlink. The directory junction seems quite akin to folder shortcut, but in real, it's quite different. The advantage of directory junction over Windows shell shortcut (which acts as a pointer for target folder) is that Directory Junction enables you to access files from within the folder and can be accessed from both Windows Explorer and [Command Prompt](#) .

To create a symbolic link for folder or file, pick the *symlink type*. Depending upon the type, enter the source and target locations. For instance, if you want to create file symlink, enter the complete path of folder where you want to save the link followed by link name. Now specify the file which is to be linked. Once done, select the type of link; Symbolic Link or Hard Link.



Clicking on **Create Link** will create a link at defined location. Similarly, you can create other types of links.



symlinker is a portable PHP Windows application that creates hardlinks, symbolic links, junctions, and shortcuts. It is an [opensource](#) application.  
Related Articles:

1. [Easy Way To Create Symbolic Directory Links In Windows 7/Vista](#)
2. [How To Convert A Directory Into HTML Index File Or Create A Sitemap](#)
3. [Delete Log Files From Windows Directory Using Command Prompt](#)

[Read more](#)