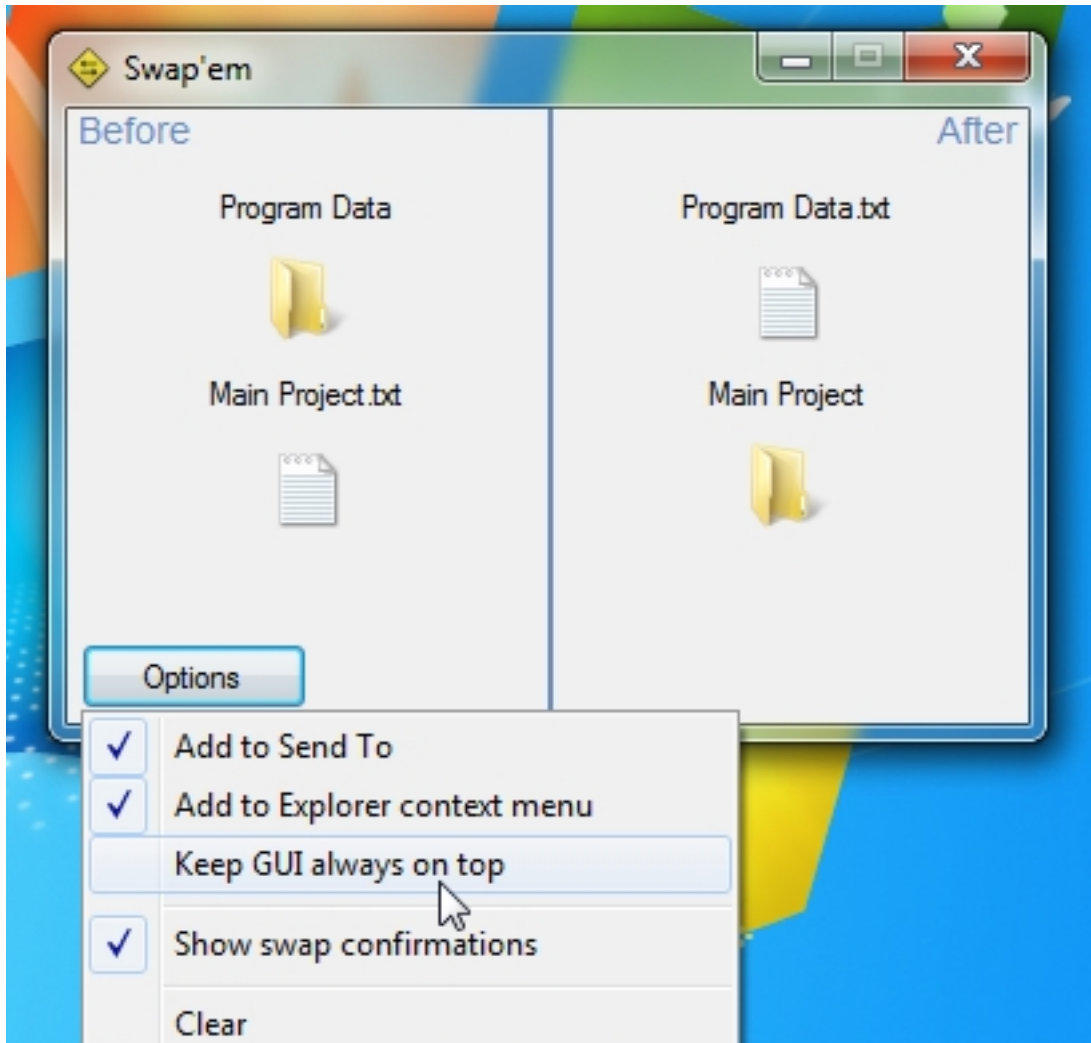


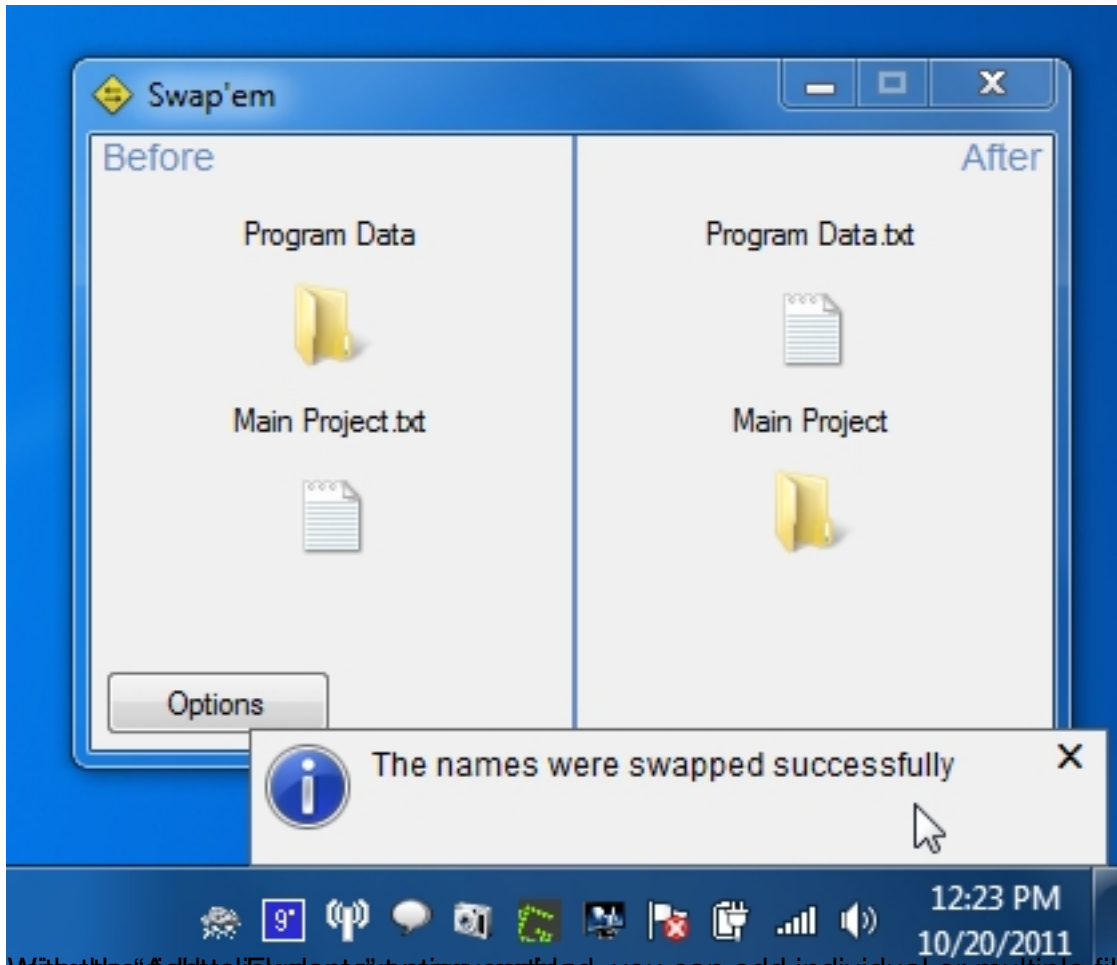
Sometimes, when you want to rename a file to something else, a message pops up telling you that the desired name is already taken by another file in the same location. In this situation, what you would normally do would be changing the name of the first file to something else, then renaming the required one with the title of choice. Instead of going through that hassle every time you come across such a situation, you can use a small tool called **Swap'em**. It is a portable tool that can be used to quickly and easily swap the names of two files or folders either by using the file context menu or by dropping items onto the application's interface. Apart from swapping names of two files, it allows you to do the same for a file and folder combination.

You can add files and folders either one by one or in one go depending on their location. The application lets you choose which context menus to add Swap'em in, whether you want the application's GUI to always be on top and if you want swap confirmation notifications to be displayed.

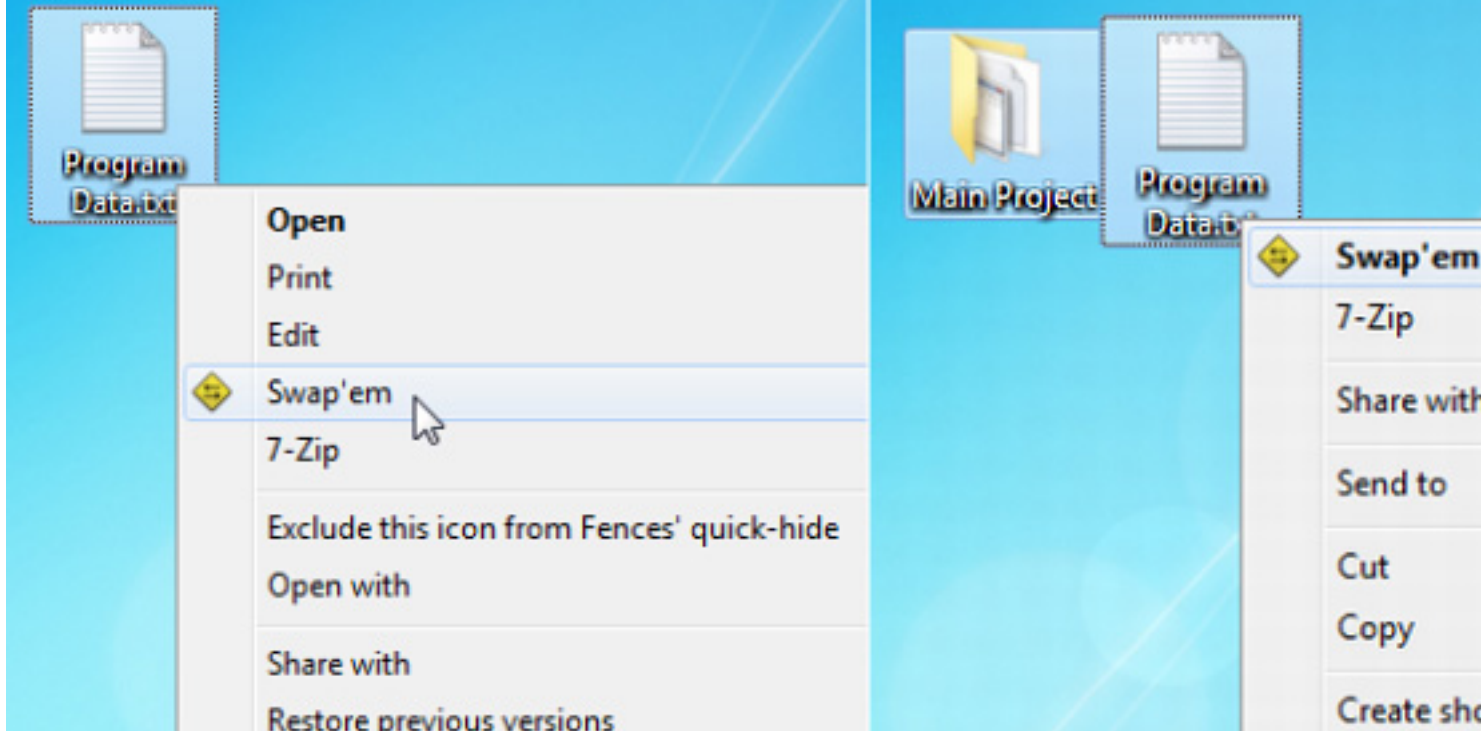
There's nothing much to the application's interface. It basically contains a Before and After representation of how it works, and an *Options* button in the bottom-left corner that allows you to change settings such as "Add to Send to" (to add Swap'em to the "Send to" menu) , "Add to Explorer" (to add Swap'em to file and folder context menu) "Context Menu", "Keep GUI Always on Top" (to keep Swap'em always on top of other windows) and "Show Swap Confirmations" (to receive notifications on desktop).



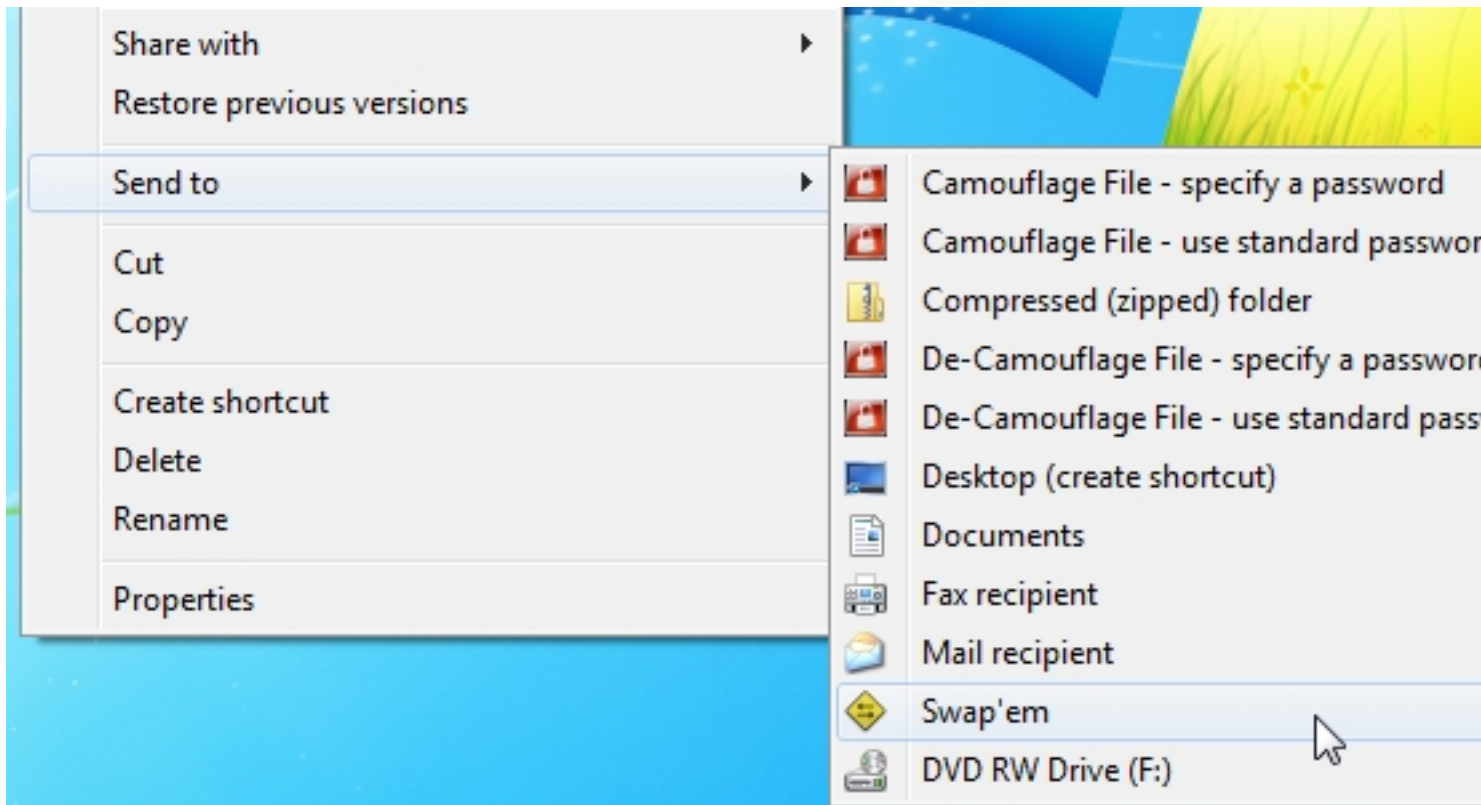
Open a file and right-click on it to see the Swap'em window, or click on the Swap'em icon in the system tray to see the Swap'em window.



With the "Add to Elements" button enabled, you can add individual or multiple files to Swap'em



Swapping files and folders with Swap'em is a simple process. Just right-click on the file or folder you want to swap and select Swap'em from the context menu.



Right-click on a file and the context menu will appear. In the 'Send to' submenu, you will see a custom option 'Swap'em'.

Related Articles:

1. [Move Files To Their Respective Folders From Windows Context Menu](#)
2. [Customize Context Menu Of Files, Folders, Drives & Desktop In Windows](#)
3. [File 2 Folder: Move Selected Files To New Folders Through Context Menu](#)

[Read more](#)