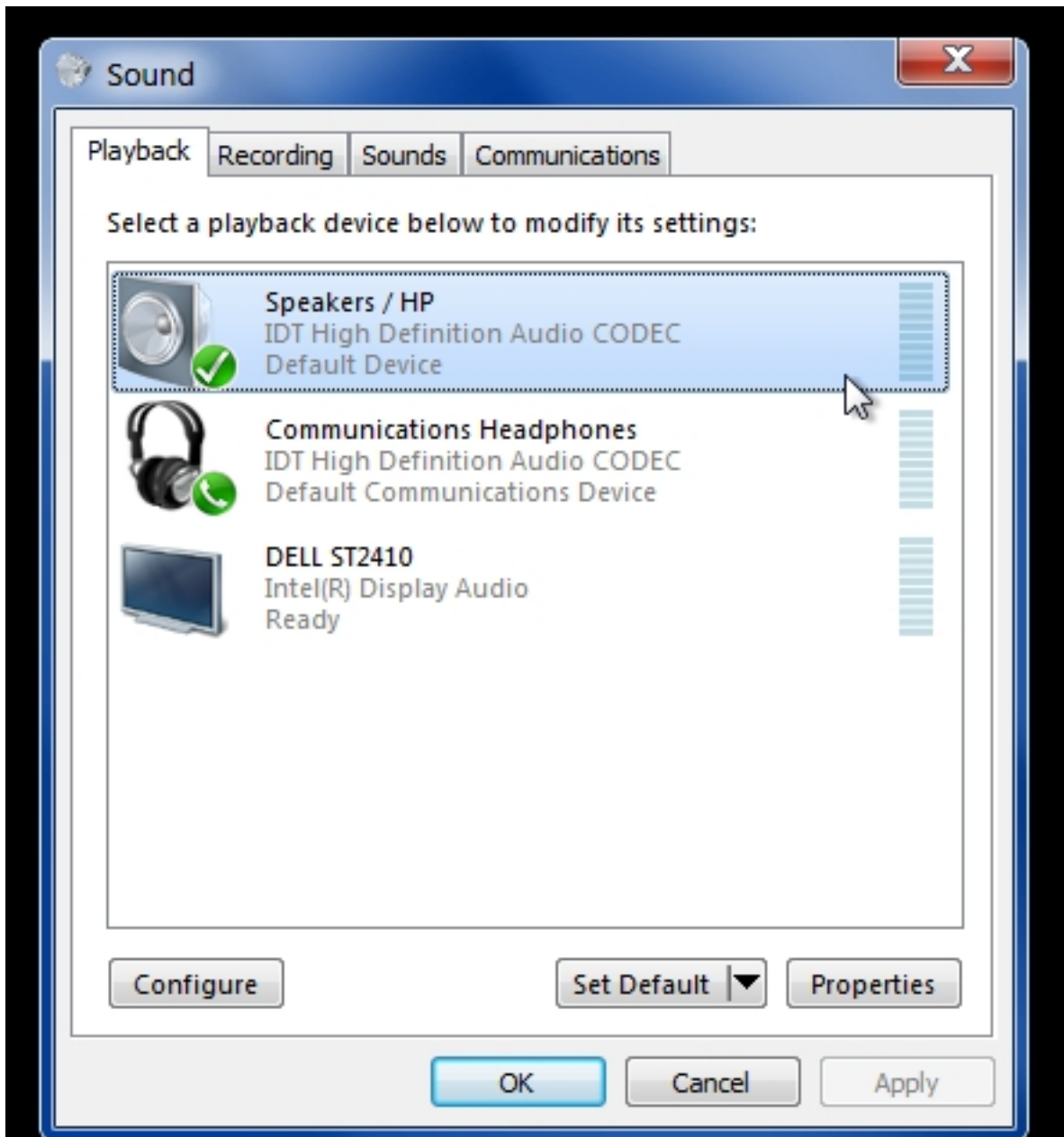
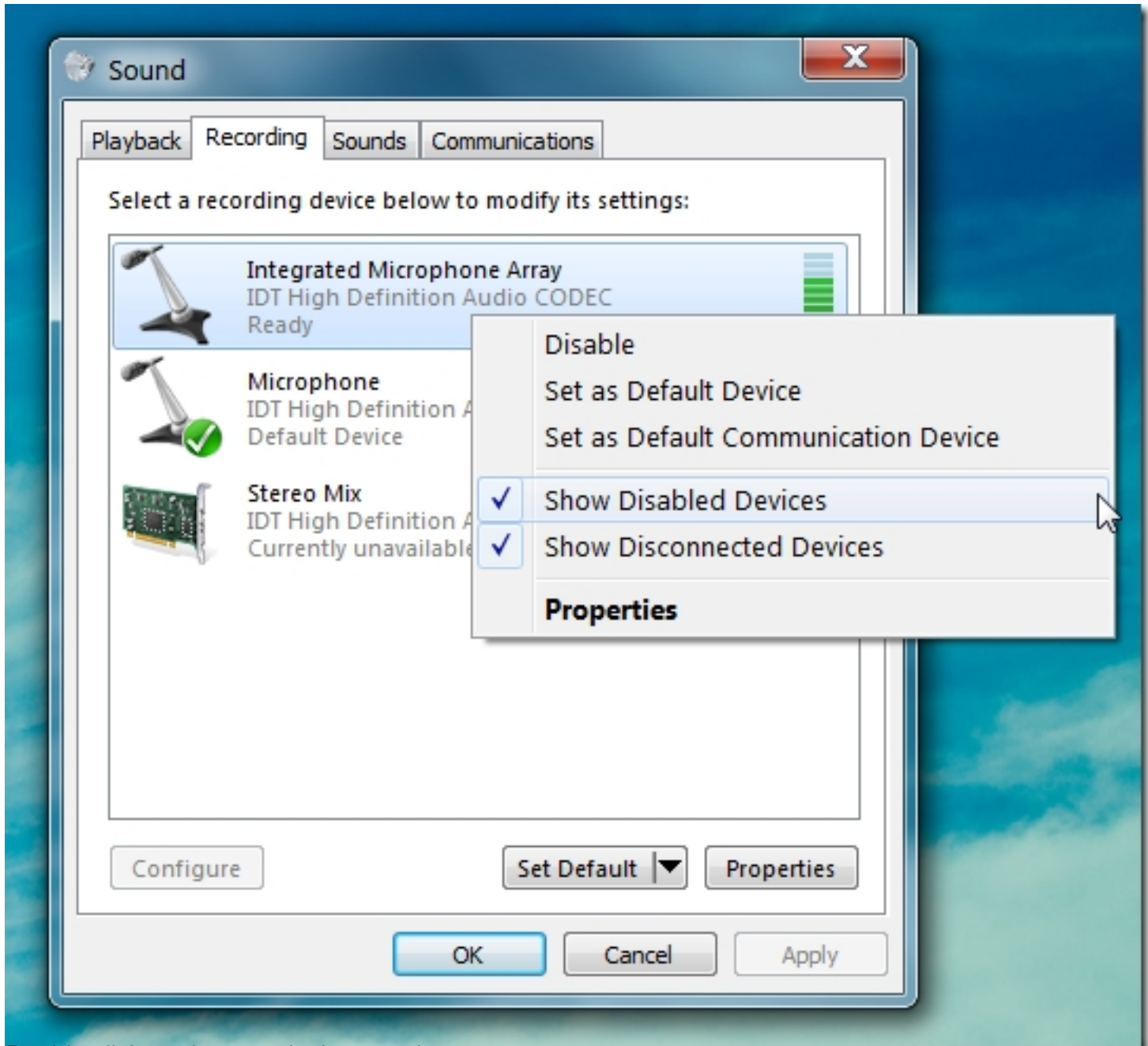


High-Definition Multimedia Interface ([HDMI](#)) is an audio/video interface for transmitting digital data which provides better quality output than analog. Normally, one can only select one device for audio playback in Windows. This causes a common annoyance of having to continually switch between the sound card and HDMI speakers. However, it is also possible to receive output from speakers and an HDMI device simultaneously to play audio from a single application at the same time. If you would like to get audio output from both an HDMI device and your speakers, read on after the break.

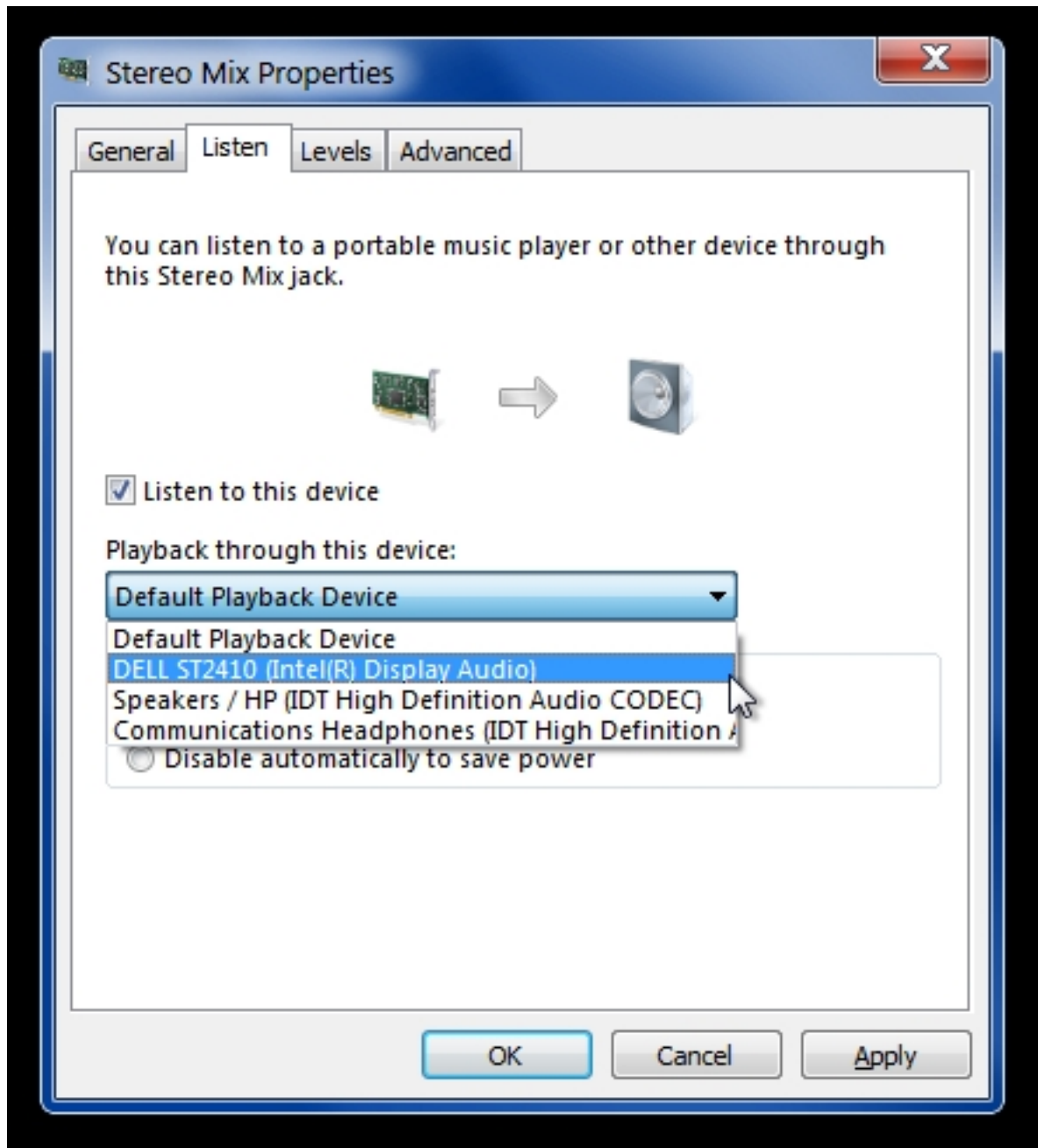
To get started, open *Sound* Properties from Control Panel. From the Playback tab, select speakers and click *Set Default*.



Copyright © 2015 by Steve Nouri. All rights reserved. This document is the property of Steve Nouri. No part of this document may be reproduced, stored in a retrieval system, or transmitted in any form or by any means, electronic, mechanical, photocopying, recording, or by any information storage and retrieval system, without the prior written permission of Steve Nouri.



Double click on the new device to select Properties. On right click on microphone and then double click on microphone to select Properties. On right click on microphone and then double click on microphone to select Properties.



Windows 7: The next step would be to uncheck the 'Listen to this device' checkbox and select 'Speakers / HP (IDT High Definition Audio CODEC)' from the dropdown menu. This will allow you to play audio back from both your speakers and

Related Articles:

1. [Automatically Mute Speakers On Lock \[Windows\]](#)
2. [How To Play And Convert AMR Audio Files](#)
3. [Stream Audio From One Sound Card Or Device To Another With Playthrough](#)

[Read more](#)