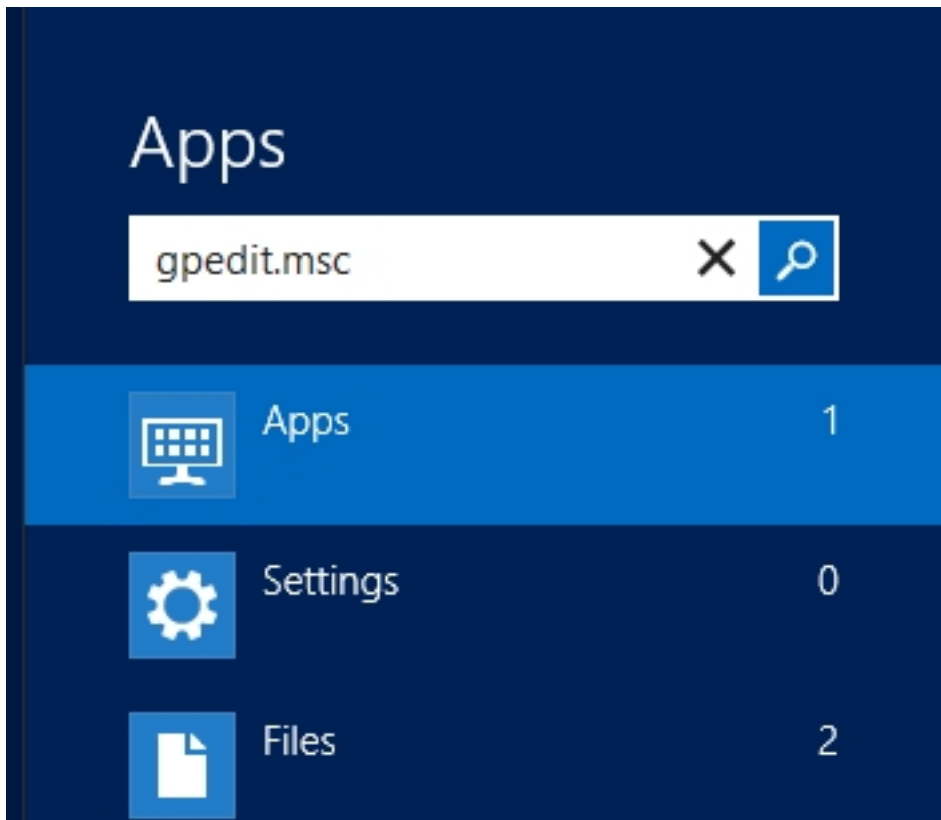
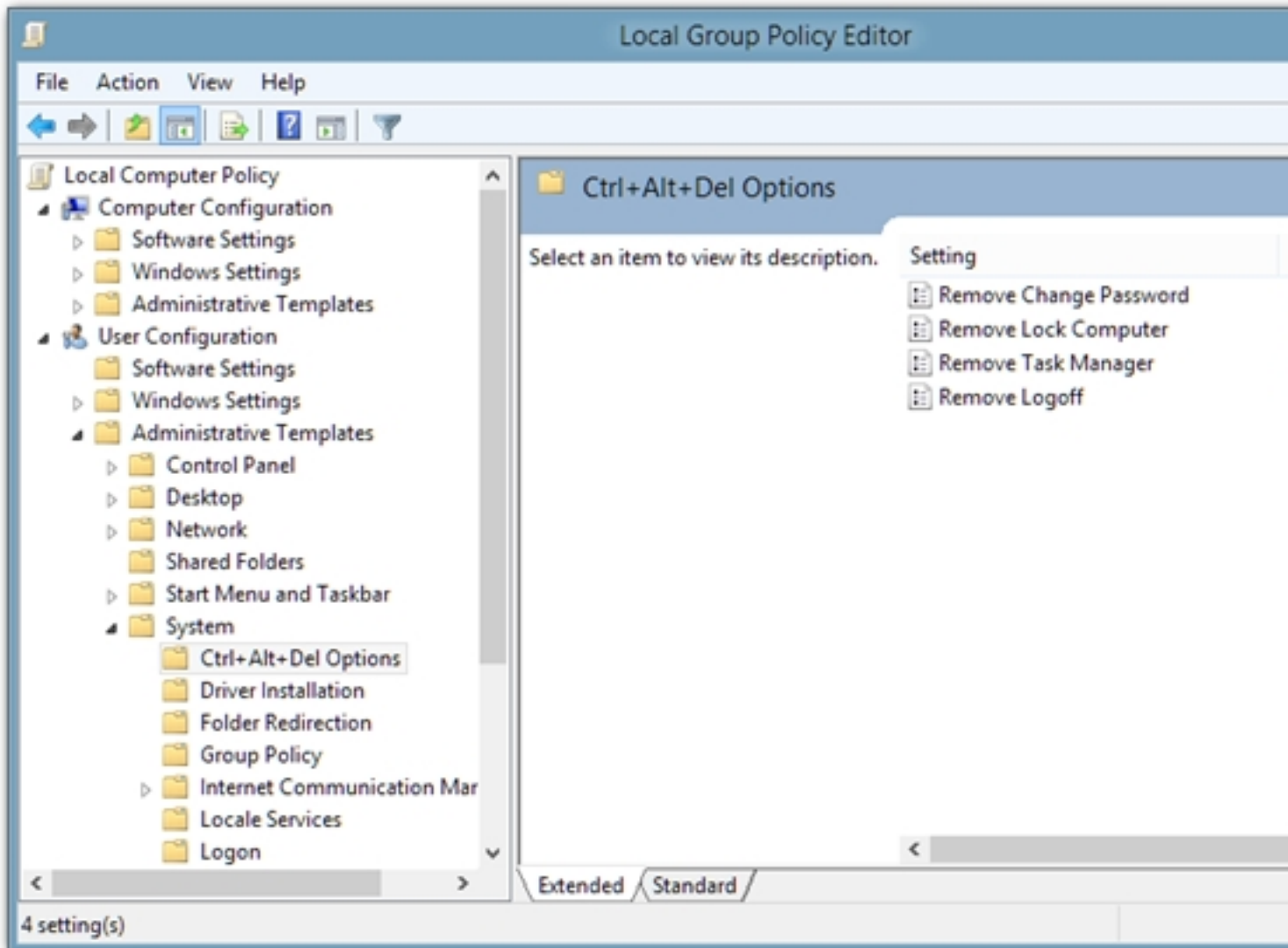


The Ctrl + Alt + Del menu in Windows allows you to Lock your PC, Switch the User, Sign Out of the current User and access Windows Task Manager. The Ctrl + Alt + Del hotkey combination used to accessing this menu takes precedence over every other command by Windows. The key combination allows you to reboot your computer, bring up the logout options and access the task manager. That is the reason why it is mostly used when the PC hangs and the application-specific input controls get disabled. Whenever any application goes to the not responding mode, it is not possible to close it by using regular methods, such as the Alt + F4 command or using your mouse to click the Close button. In this case, the Ctrl + Alt + Del menu is used to access the Task Manager, so that you can close the application by killing its process. However, novice computer users do not use, and don't have a lot of knowledge about, the Windows Task Manager. So, if a lot of people use your computer – for instance if it's a public computer – you might not want to disable access to the Windows Task Manager. In this post, we will show you how to disable Task Manager for all users in Windows 8. Additionally, it includes a guide to removing options from the Ctrl + Alt + Del menu in Windows 8 for all users.

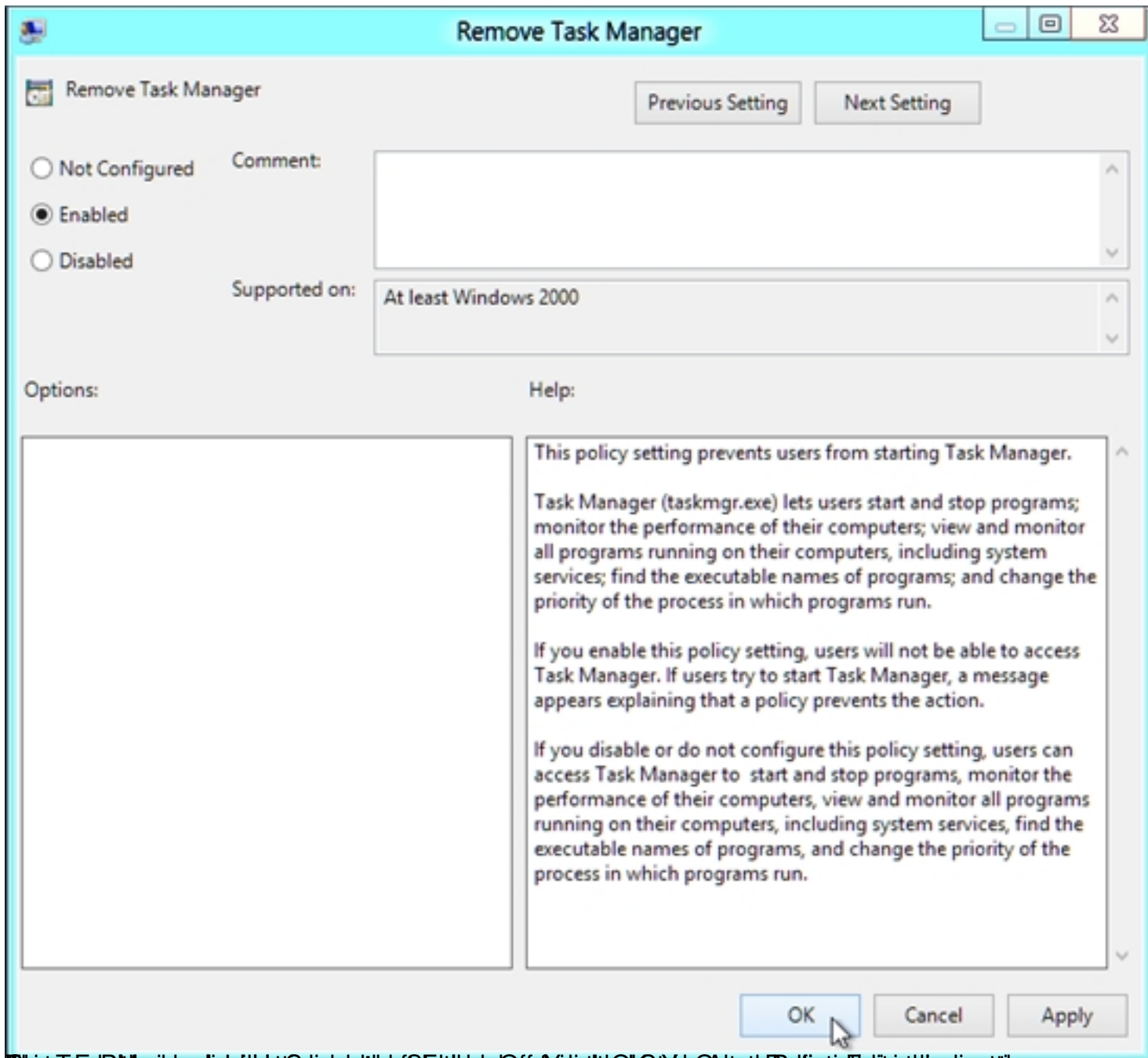
To begin, make sure that you have logged into Windows as Administrator, or have acquired administrative rights to change local group policy settings. Next, go to Start Screen, type *gpedit.msc*, select Apps from the right sidebar, and then click *gpedit.msc* in the main window.



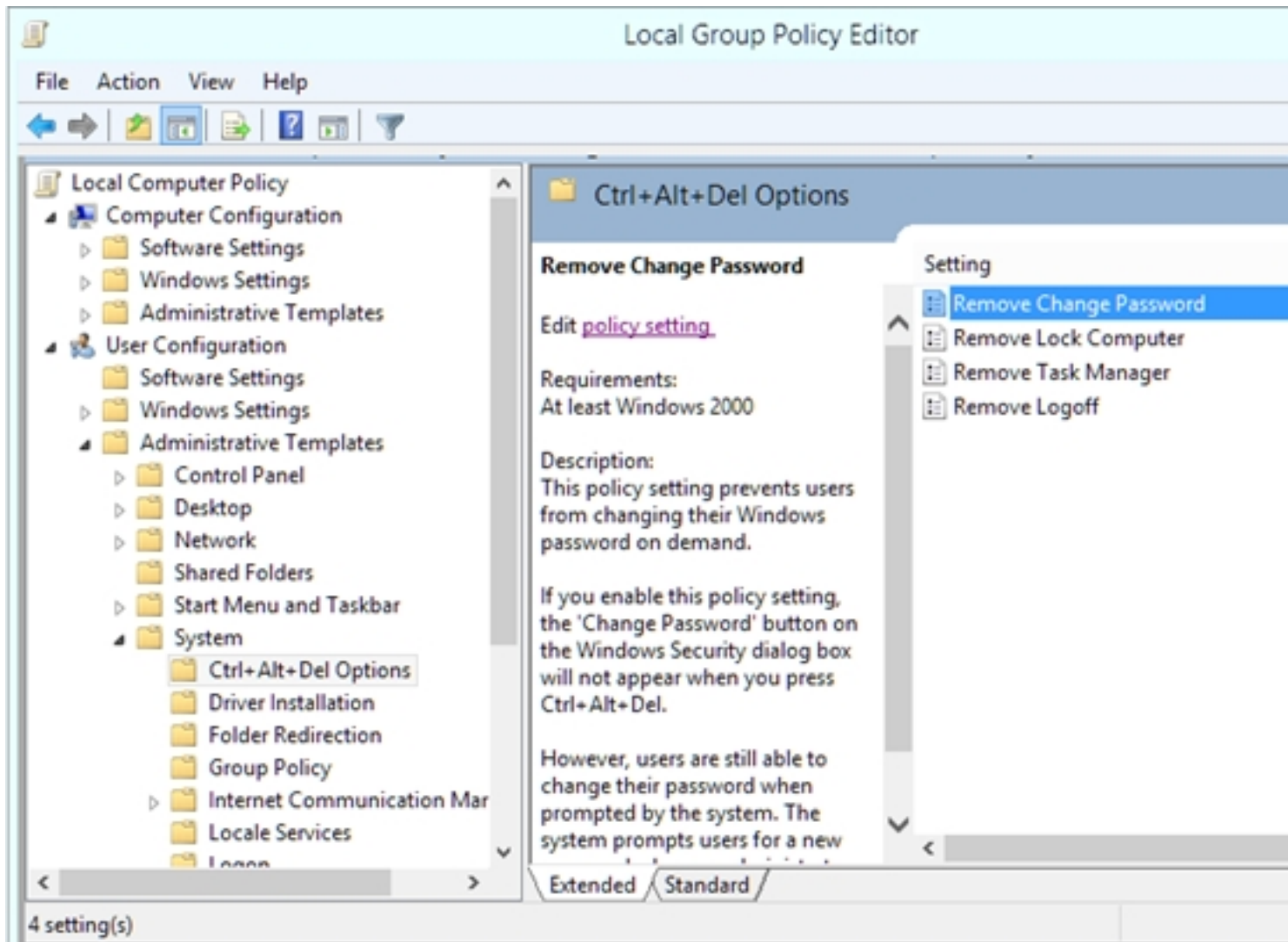
How to Disable Ctrl+Alt+Del Menu Policy Editor Group in the Following Location and Hold for Ctrl



Tip: We offer a <http://www.digipedia.com/2012/05/01/disable-task-manager-remove-options-from-ctrl-alt-del-menu-for-all-users-in-windows-8/> for more information.



Click on the 'Remove Task Manager' policy setting in the Group Policy Editor to configure the 'Remove Task Manager' policy setting.



Now, all the removed items will not appear in the Ctrl + Alt + Del menu for all users.



Lock

Switch user

Sign out

Related Articles:

1. [How To Disable Windows Task Manager Using Registry](#)
2. [Get Windows 7 Start Menu, Explorer And Task Manager In Windows 8](#)
3. [Customize Windows 7 Task Manager Colors With Task Manager Modder](#)

[Read more](#)