

Like previous version of Windows, Windows 7 saves [Aero](#) themes settings, images (PNG format) and metadata information required to set the themes design and layout in *Aero.msstyles*

file. Since there is a difference between Windows XP, Windows Vista and Windows 7 skinning engines and msstyles file rendering mechanisms, you can't use Windows 7 themes on previous versions of Windows, unless you convert

[PNG](#)

images into

[BMP](#)

and tinker around with metadata to meet the required Windows version skinning engine's requirements. Windows 7 allows admin users to enforce

[visual style](#)

settings file for all system users, so that standard and guest users can't change the visual styles while changing themes. Moreover, using this

visual style enforce

option, one can easily share visual style settings file over the network, as it has the ability to read visual style settings from both local and remote locations. In this post, we will guide you through the process of enforcing a style theme across the network.

Since this method includes changing *Personalization* settings in *Local Group Policy Editor*, you need to log into Windows as admin to make the required changes. To begin, type

group policy

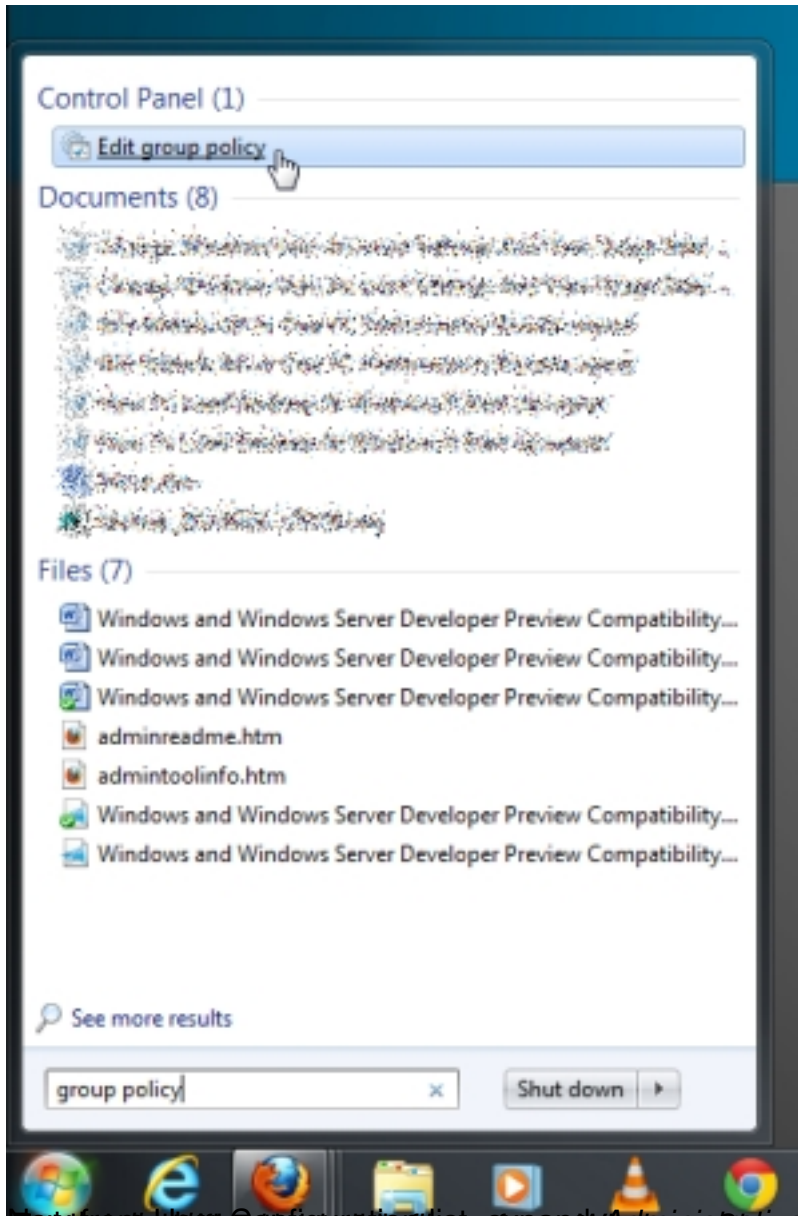
or

gpedit.msc

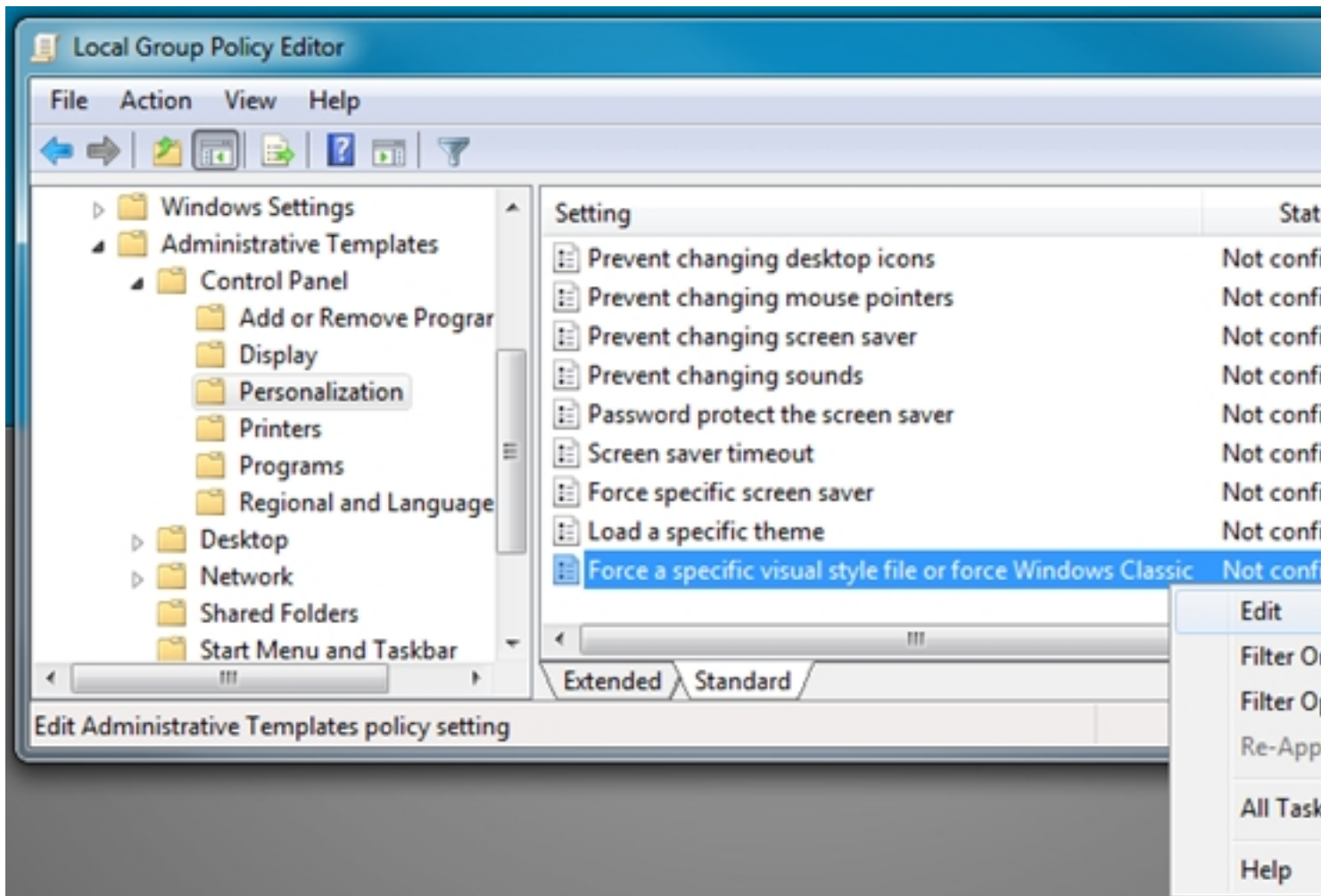
in Start search and hit enter to open

Local Group Policy Editor

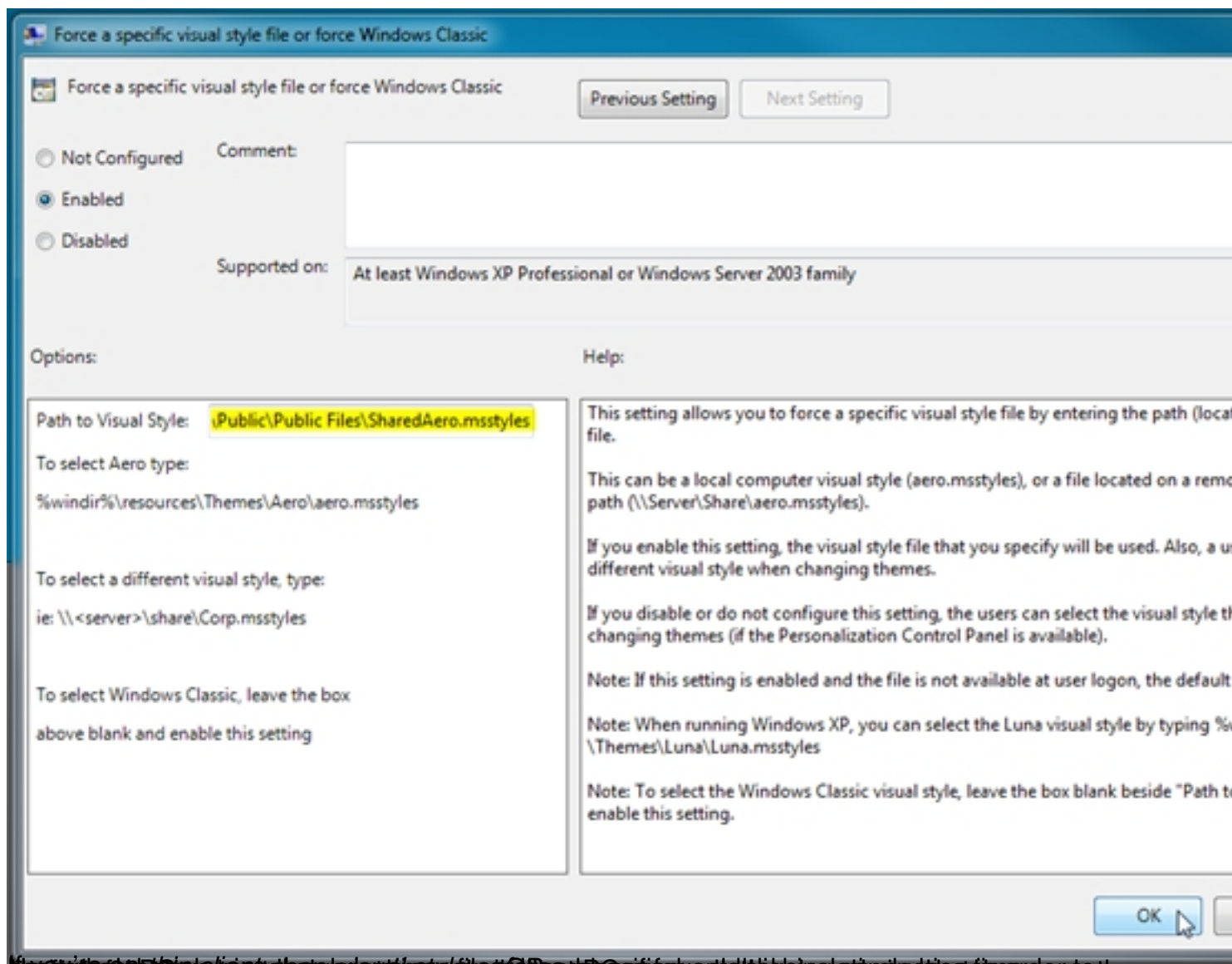
.



Open Windows 7 Start menu, type in group policy and Windows 7 search results. Templates followed by Control Panel,



The screenshot shows the Local Group Policy Editor window. The 'Force a specific visual style file or force Windows Classic' policy is selected. The context menu is open, showing options like 'Edit', 'Filter O...', 'Filter O...', 'Re-App...', 'All Task...', and 'Help'. The status bar at the bottom of the window reads 'Edit Administrative Templates policy setting'.



How to force Windows 7 Aero visual style settings across network PCs by using the Group Policy Editor. This article shows you how to force Windows 7 Aero visual style settings across network PCs by using the Group Policy Editor.

- Related Articles:
- [Switch Between Visual Studio 2010 Settings Files With Settings-Switcher](#)
 - [XP Style Network Activity Indicator For Windows 7](#)
 - [Aero Adjuster Brings Windows 8 Aero Color Change Feature To Windows 7](#)

[Read more](#)