

Previously, we covered [AeroSnap](#) -based [desktop window management](#) applications such as [reSizer](#) and

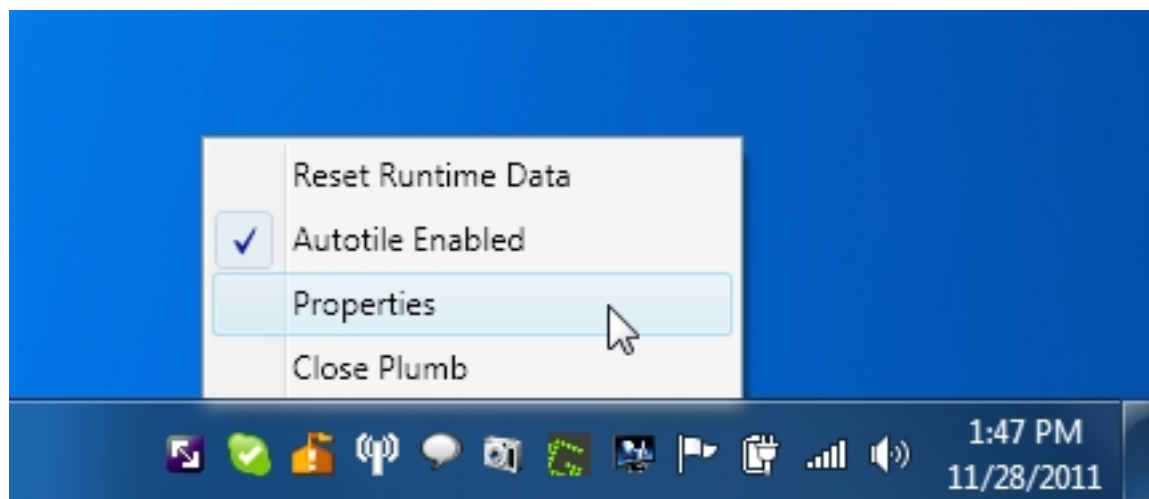
[GridMove](#)

, which let you resize the active desktop windows to make full use of the available screen space. These applications allow you to resize windows either by using hotkeys, or by dragging windows to the side of your screen, but wouldn't it be easier if an application can resize and adjust your desktop windows for you automatically?

### **Plumb**

does exactly that. It is an application that arranges the desktop windows automatically as you open them, based on a pre-defined criteria. You can choose to resize already open neighbor windows, enable mouse swap, maximize single window and select horizontal or vertical split mode between two windows. More to follow after the break.

After installation, Plumb will run quietly in the system tray. Right-click its [system tray](#) icon and select *Pro* *erties* to access the options dialog box.



The options dialog box has *General*, *Tiling*, *Autotile Options*, *Window Selection* and *Advanced* tabs available.

### *General*

tab has options to enable and disable basic functions of the application such as

*Autotile*

and

*Start Automatically*

. The

*Tiling*

tab has tiling options to define desktop window arrangement behavior, and

*Autotile*

*Options*

include

*Maximum*

*Tiles*

and

*Minimize*

*Extras*

. The

*Windows Selection*

tab lets you include and exclude windows from the

*Autotiling*

function, while

*Advanced*

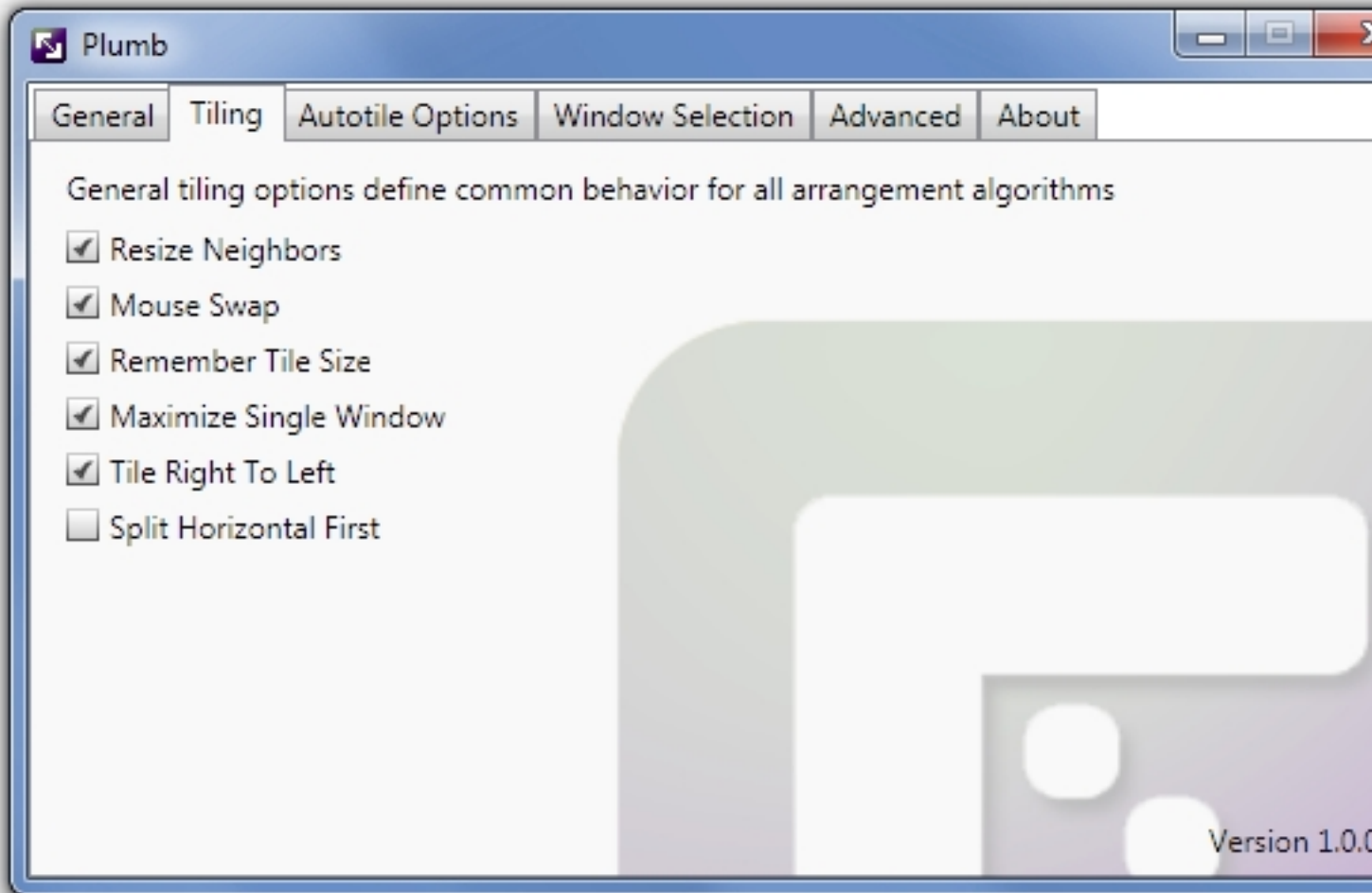
tab sports beta features such as

*Remember Window Position*

and

*Restore Minimized*

.



Once a window is dragged, Plumb automatically adjusts desktop window's positions and sizes



Download Plumb from Windows XP, Windows Vista and Windows 7.

## Related Articles:

1. [GridMove: Automatically Resize App Windows To Adjust Their Positions On Screen](#)
2. [Resize Windows To Any Pre-Defined Resolution With Sizer](#)
3. [Stop An Application From Running Automatically At Startup In Windows 7 / Vista](#)

[Read more](#)