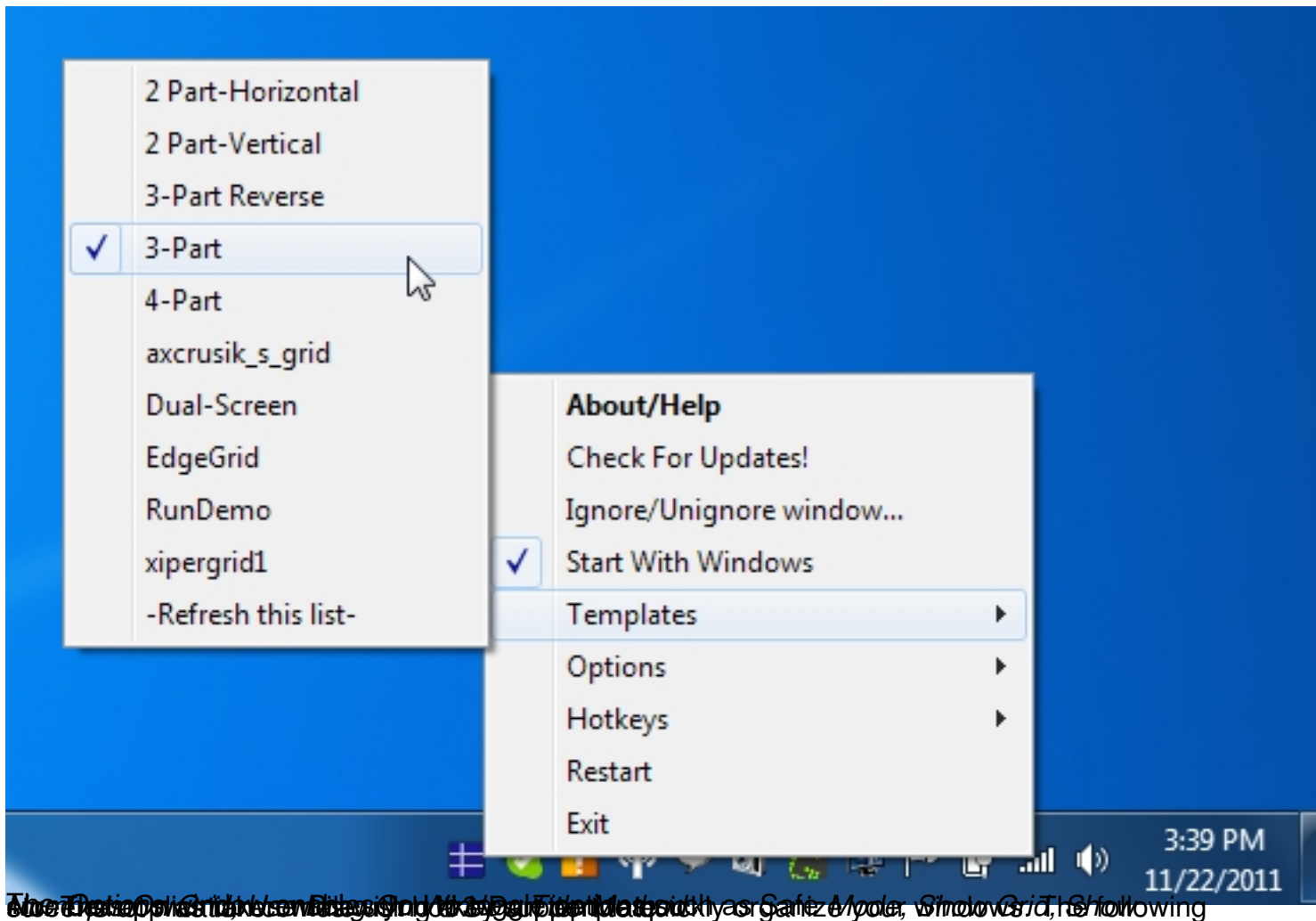


When working on a computer, it's common for a lot of users to keep two or three desktop windows open at a time. Switching between windows can be irritating specially when you have to compare contents of two windows. **GridMove** is a [desktop window manager](#) that lets you quickly [resize](#) windows by dragging them to the sides of your computer screen. It creates a visual grid on your computer screen, making it easy for you to snap and resize windows. It is particularly useful for users who have large screens, and usually keep two or more than two desktop windows open at the same time. With multi-monitor support, predefined resizing templates allow you to maximize the useable space of your monitor.

The application runs in the [system tray](#) and you can switch between different templates by right-clicking its system tray icon and selecting *Templates*. You can choose Templates such as *2-Part Horizontal, 2-Part Vertical, 3-Part, 4-Part* etc.





To view the desktop window XP, Windows Vista or Windows 7 system tray icon and select [A Related Articles:](#)

1. [TicClick: 9 Positions To Quickly Adjust Active Windows On Desktop](#)
2. [Screen Locker – Pre-Set Time To Automatically Lock Your Windows Screen](#)
3. [Adjust LCD Monitor Screen Brightness](#)

[Read more](#)