

While diagnosing system issues, it can be hard to identify the source of software and hardware problems. In such a case, precise information regarding hardware and operating system specifications is required to identify and resolve issues. **Fresh Diagnose** is a [benchmarking](#) application for benchmarking system components that covers anything from the BIOS to installed application, and even the motherboard. Fresh Diagnose displays comprehensive benchmarking results and provides in depth information about almost every system component.

The available information is distributed in numerous categories, which can be accessed from the left side bar or the top menu. The categories include *Software System*, *Hardware System*, *Devices*

,
Network and Internet

,
Multimedia

,
Database System

,
Hardware Resources

,
Snapshot

,
Traces

and
Benchmarks

.

The screenshot displays the FreshDiagnose application window. The title bar reads "FreshDiagnose". The menu bar includes "File", "Info", "Benchmark", "Help", and "Support Site". The toolbar contains icons for "Refresh", "Up", "Save", "Print", "Report", "Windows", "Hardware", "Devices", "Networks", and "Multimedia".

On the left, a tree view shows the following categories:

- FreshDiagnose
 - Software System
 - Hardware System
 - Devices
 - Network and Internet
 - Multimedia
 - Database System
 - Hardware Resources
 - Snapshot
 - Traces
 - Benchmarks

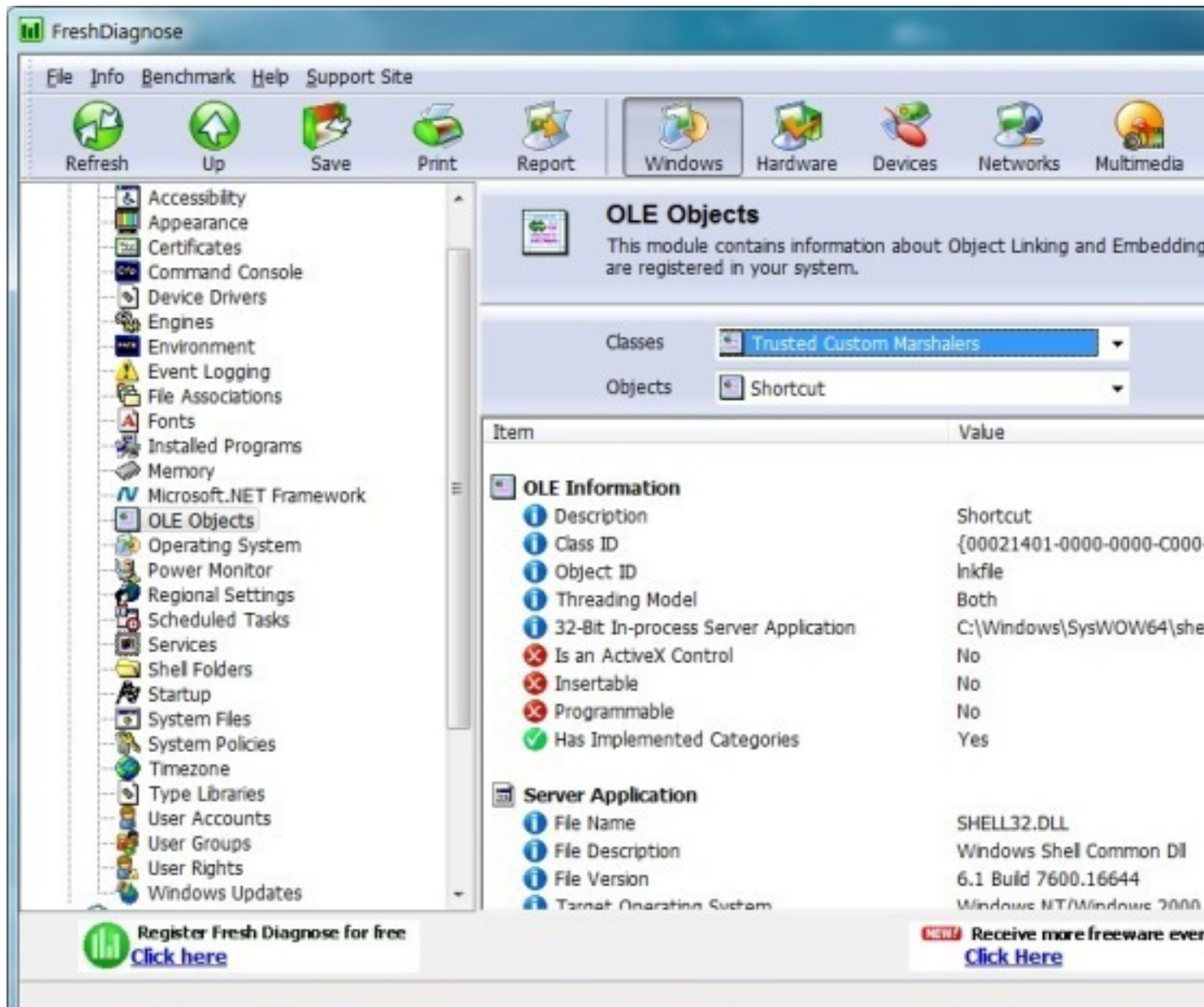
The main content area is titled "Software System" and contains a list of modules with their descriptions:

- Accessibility**: This module contains information about windows accessibility configuration.
- Appearance**: This module contains information about windows appearance, including colors.
- Certificates**: This module contains information about installed certificates in your system.
- Command Console**: This module contains information about command console (MS-DOS Box).
- Device Drivers**: This module contains information about loaded device drivers in your system.
- Engines**: This module contains information about database engines, script engines and...
- Environment**: This module contains information about environment variables in your...
- Event Logging**: This module contains information about application security and system events.
- File Associations**: This module contains information about the...
- Fonts**: This module contains information about fonts.

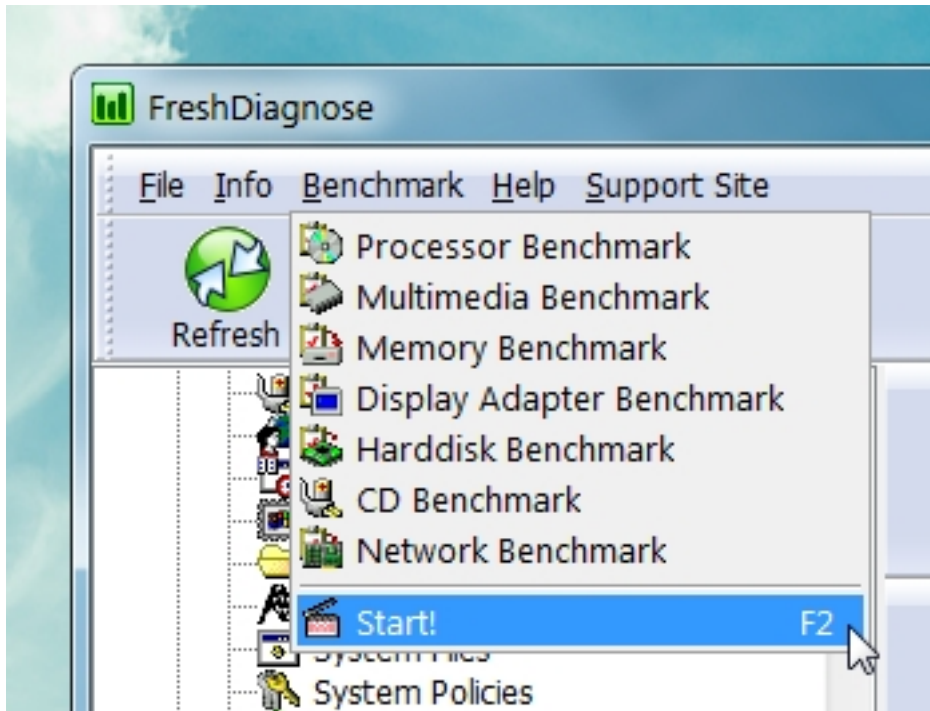
At the bottom of the window, there are two promotional banners:

- "Register Fresh Diagnose for free [Click here](#)"
- "Receive more freeware ever [Click Here](#)"

Free Download of FreshDiagnose for Windows PC - Download.com



Selecting Shell32.dll system component by selecting it from the Benchmarks category and



This will be a nice, simple, and easy-to-use tool for diagnosing hardware and software issues on a Windows system. It is a good idea to have this tool installed on your system, especially if you are a power user or a system administrator. The tool is available for free download from the FreshDiagnose website.

The screenshot displays the FreshDiagnose application window. The interface includes a menu bar with 'File', 'Info', 'Benchmark', 'Help', and 'Support Site'. Below the menu is a toolbar with icons for Refresh, Up, Save, Print, Report, Windows, Hardware, Devices, Networks, and Multimedia. A left-hand navigation pane lists various system components, with 'Benchmarks' expanded to show options like Processor Benchmark, Multimedia Benchmark, Memory Benchmark, Display Adapter Benchmark, Harddisk Benchmark, CD Benchmark, and Network Benchmark. The main area is titled 'Harddisk Benchmark' and contains a dropdown menu for 'Drives' set to 'C:\ [- None -]'. A bar chart titled 'Benchmark Result' shows performance values for 1 through 7 years, with the final bar for 'Years' reaching 35.41. Below the chart is a table with two columns: 'Item' and 'Value'. The table lists 'Write Speed Average' as 35.41 MB/s and 'Read Speed Average' as 2124.8 MB/s. At the bottom of the window, there are two promotional banners: 'Register Fresh Diagnose for free Click here' and 'NEW! Receive more freeware every Click Here'.

[Fresh Diagnose works on Windows XP, Windows Vista and Windows 7.](#)

Related Articles:

1. [Check File Security Issues And Analyze Integrity With FileAlyzer](#)
2. [Diagnose/Repair Your Seagate Or Maxtor Drive With SeaTools](#)
3. [Monitor Temperature Of System Components In Ubuntu With Psenor](#)

[Read more](#)